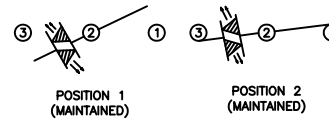


SCHEMATIC



SPECIFICATIONS

FUNCTION:
1P1T OFF-ON

RATINGS:
UL 1054
20A 125VAC [cURus]
16A 250VAC [cURus]
3/4HP 125/250VAC [cURus]

ENEC/VDE
16(4)A 250V~ 1E4 T85/55 [ENEC10, VDE]
10(2)A 250V~ 5E4 T85/55 [ENEC10, VDE]
20(8)A 250V~ 1E4 T125/55 [ENEC10, VDE]

ILLUMINATION VOLTAGE:
14V

CONTACT RESISTANCE:
Initial: 20mΩ Max.

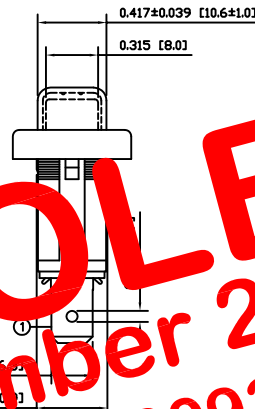
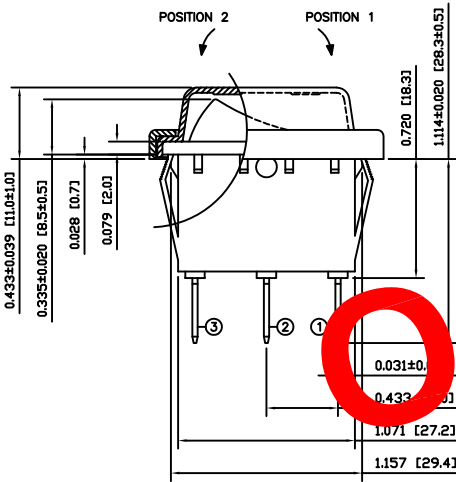
INSULATION RESISTANCE:
100MΩ Min. at 500VDC

DIELECTRIC STRENGTH:
1,000VAC for 1 Minute

ELECTRICAL LIFE:
6,000 Cycles [cURus]
10,000 Cycles [ENEC10, VDE: 16(4)A 250V~]
50,000 Cycles [ENEC10, VDE: 10(2)A 250V~]

TEMPERATURE:
Operating: -20°C to 65°C [cURus]
Operating: -20°C to 125°C [ENEC10, VDE]
Operating: -20°C to 85°C [ENEC10, VDE]

APPROVALS:



OBSOLETE
 November 2017
 PCR 23093

COLORS AND MARKINGS

BODY:
Black

ACTUATOR:
Transparent Red

MARKINGS:
None

MARKING COLOR:
None

FRAME:
Black

MATERIALS

BODY:
Polyamide 6/6 (PA66), UL94 V-2

ACTUATOR:
Polycarbonate (PC), UL94 V-2

LAMP CARRIER:
Polyamide 6/6 (PA66), UL94 V-2

LAMP:
LED

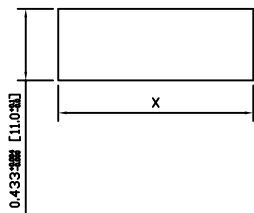
LAMP SPRING:
Steel

SPRING:
Steel

CONTACTS:
Silver Plated Copper

TERMINALS:
Silver Plated Copper
Silver Plated Brass

SUGGESTED PANEL CUTOUT



| PANEL THICKNESS | | X |
|-----------------|-------------|--------------|
| 0.030~0.049 | [0.75~1.25] | 1.189 [30.2] |
| 0.049~0.079 | [1.25~2.00] | 1.201 [30.5] |

| | | | |
|----------|---|----------|-----|
| ACTUATOR | A | 09/07/06 | CAB |
| BODY | A | 09/07/06 | CAB |
| COLORS | A | 09/12/09 | CAB |

THE INFORMATION CONTAINED IN THIS DOCUMENT IS PROPRIETARY TO E-SWITCH AND IS NOT TO BE COPIED OR TRANSFERRED

| | | | | |
|------|--|-------|-----------|----------|
| B | LAMP FROM INCAND. BULB TO LED, UPDATE SCHEM. AND SPEC. | 21826 | 6/15/2015 | MW |
| A | INITIAL RELEASE | 18992 | 10/02/22 | CAB |
| REV. | DESCRIPTION | PCR | DATE | DRAWN BY |

| | |
|----------------------|------------|
| DIMENSIONS | |
| INCHES [MILLIMETERS] | |
| GENERAL TOLERANCES | |
| ±0.008 [±0.2] / ±1' | |
| SCALE | PROJECTION |
| DRAWING NOT TO SCALE | 1st Angle |

RB141D1000-11A/ACC-F01-1

| | | |
|--------------|-------------------|----------|
| ITEM NUMBER | DATE | REVISION |
| 14-RB1S00057 | FEBRUARY 22, 2010 | B |